



## Key Features

- Six multi-purpose I/O ports.
- Three programmable 12VDC trigger outputs.
- Three assignable voltage sense inputs.
- Three programmable relay outputs.
- Two RS-232 ports for bi-directional communication.
- Compatible with RTI ZigBee® Transceiver Module for two-way communication.
- I/O ports are compatible with industry standard IR emitters, blasters, and repeater systems.
- All output ports incorporate both short-circuit and overload protection.
- Variable IR output on all ports.
- I/O ports support all optional RTI power sensing and communications modules.
- Programmed using the Integration Designer™ Software.
- Non-volatile Flash memory stores your system configuration even when power is not present.
- USB and Ethernet programming.
- Input for connection of multiple RF receiver modules.
- Field upgradable firmware.
- USB programming.

## ZRP-6 Remote Control Processor

Representing the 2nd generation of the groundbreaking RP-6 remote control processor from RTI, the ZRP-6 includes many welcome refinements. While maintaining all of the popular aspects of the RP-6, the ZRP-6 features an expanded configuration of control ports. The ZRP-6 is also equipped with support for separate RTI ZigBee® pt pt RF transceivers (ZM-24), while sense inputs allow events to be triggered from 3rd party devices. Multiple ZigBee® transceivers can be used together to gain greater RF transmission coverage in larger projects, providing the freedom to access and control the electronics system from just about anywhere. An added Ethernet port also allows for remote programming and control of IP addressable devices.

## Description

The ZRP-6 raises the level of automation and control of any electronics system. The ZRP-6 is loaded with features to provide sophisticated control at a modest price, with built-in IR routing and pass-thru, relay control, sense inputs, Ethernet, and expansion ports. And when other RTI accessories are added, advanced control options such as RS-232 communication and power sensing become available. Finally, the ZRP-6 provides the ability to store the systems IR commands at the central processor for more reliable macro execution and powerful automation. The ZRP-6 is the ideal centerpiece for any control system solution.

Call 952-253-3100

[www.rticorp.com](http://www.rticorp.com)



It's Under Control®

## Specifications

Power Supply .....	+12V DC, 1A
IR Output Ports.....	Six 3.5mm jacks
.....	Compatible with industry standard IR emitters
IR Output Drive.....	100mA maximum (per port, adjustable)
.....	200mA maximum (high IR output port)
Infrared Frequency Transmission Range .....	15kHz - 460kHz
Infrared Input .....	Compatible with industry-standard repeaters and receivers
Trigger Outputs .....	Three, 12 VDC, 100mA max each
Sense Inputs.....	Three, 3-24VDC
RS-232 Ports .....	Two, Bi-directional RJ45 Connections
Ethernet Port .....	10/100Base-T, RJ45 Connection
USB Ports.....	1 Programming
RTI Com Port.....	Two-way Zigbee® Communication Port, RJ45 Connection
Relays.....	Three, 3 Amps @ 30 VDC
Mounting.....	Wall-mount or free standing
Dimensions (W x H x D) .....	10.3" (262mm) x 5.25" (134mm) x 1.5" (38mm)
Weight .....	1 lb. 3 oz. (543g)
Warranty.....	One Year (Parts & Labor)

All specifications subject to change without notice



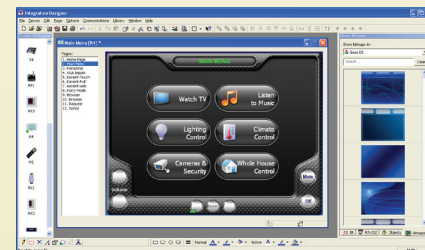
## Accessories

<b>RM-433</b>	<b>RF Receiver</b>
<b>ZM-24</b>	<b>Zigbee® Transceiver Module</b>
<b>CB-4</b>	<b>Touchpanel Connecting Block</b>
<b>RCM-12</b>	<b>Relay Control Module</b>
<b>ECB-5</b>	<b>IR Emitter Connecting Block</b>
<b>CM-232</b>	<b>RS-232 Communication Module</b>
<b>VPS-1</b>	<b>Voltage Power Sensor</b>
<b>SPS-1</b>	<b>Video Sync Power Sensor</b>



## Other RTI Products

<b>T1</b>	<b>Universal System Controller</b>
<b>T2-B</b>	<b>Universal System Controller</b>
<b>M2</b>	<b>Universal System Controller</b>
<b>T2-Cs</b>	<b>Universal System Controller</b>
<b>T2-C</b>	<b>Universal System Controller</b>
<b>T3-V</b>	<b>Universal System Controller</b>
<b>T4</b>	<b>Universal System Controller</b>
<b>U1</b>	<b>Waterproof Controller</b>
<b>U2</b>	<b>Waterproof Controller</b>
<b>RKM-1</b>	<b>In-Wall Multi-Room Audio Keypad</b>
<b>RK1</b>	<b>In-Wall Keypad Controller</b>
<b>RK2</b>	<b>In-Wall Touchscreen Controller</b>
<b>RK3</b>	<b>In-Wall Touchscreen Controller</b>
<b>K4</b>	<b>In-Wall Touchscreen Controller</b>
<b>IR-PRO</b>	<b>Infrared Capture System</b>



Integration Designer™ Programming Software