



Key Features

- Comfortable ergonomic design permits effortless, one-handed operation.
- Easy-to-read LCD to display custom buttons, text, graphics and scrolling lists.
- Digital matrix touchscreen never needs calibration.
- Tilt switch can automatically turn on the backlight when picked up.
- Extremely bright, backlit display and keypad.
- Three-way rocker switch for scrolling list navigation.
- Intuitive layout of keypad buttons for commonly used functions.
- Transmits IR and RF (or both -on a single button press!).
- Optional RF receiver allows you to transmit through walls, cabinets, etc.
- System includes a Lithium-Ion battery and docking station.
- Extremely wide IR transmitting frequency range.
- Optional 'Voltage' and 'Video' sensing modules to monitor power status of equipment when used with certain RTI processors.
- Optional interface for RS-232 controlled equipment when used with certain RTI processors.
- Non-volatile Flash memory stores your system configuration even when power is not present.
- Field upgradable firmware.
- USB Programming.

T2-B Universal Controller

The T2-B represents a recharged version of RTI's renowned, award winning T2+ remote control. Most notable is a new contemporary industrial design. The newest T2 maintains the original hybrid configuration of a touchscreen display and hard buttons, while adding many refinements to this amazing device. Battery life has been extended with the new 1200 mAh power source. The new display and backlight make the graphics extremely sharp and vivid. The revised layout of hard buttons improves convenient access to frequently used functions, such as DVR controls. The T2-B also features a new three way rocker switch allowing comfortable navigation of onscreen guides and music lists. With its sophisticated new design the T2-B will complement the décor of any environment.

Description

The T2-B remains the ideal solution to control today's media room, embodied with the perfect balance of a customizable touchscreen display and hard buttons for tactile control. The T2-B can function as a stand-alone device or when combined with other RTI accessories it becomes an integral part of a powerful and sophisticated control system. When other RTI devices are employed, the T2-B is capable of RF transmission thru walls and cabinets, RS-232 control, contact closures, power sensing and much more. Whether used as a standalone device or integrated into a complete RTI control solution, the T2-B will provide powerful and intuitive control of any electronics system - from simple to sophisticated.

Call 952-253-3100

www.rticorp.com



It's Under Control®

Specifications

Power.....	3.6 VDC, 1200 mAh Lithium-Ion Battery Pack
Power Management.....	Automatic On/Off (tilt switch)
Infrared Control Range.....	30 feet (9.1 meters) @ 60 degrees
Infrared Frequency Transmission Range.....	15kHz - 460kHz
Radio Frequency Control Range.....	Up to 100 feet (30.5 meters)
.....	(with optional System Interfaces/Processors)
Radio Frequency Carrier.....	433 MHz
Operating Temperature.....	+32°F to +122°F (0°C to +50°C)
Operating Humidity.....	5% to 95% Non-condensing
Touch Panel Display.....	High-contrast STN LCD Digital Matrix
.....	64w x 128h pixels (Touchscreen never needs calibrating)
Display Size (H x W).....	2.4 in x 1.3 in (61mm x 33mm)
Backlights.....	White LED (Display), Blue/White/Red LED (Keypad)
Nominal Run Time on Full Charge.....	6 hours minimum, continuous use
.....	(10 to 15 days on average use)
Standby Time on Full Charge.....	30 Days
Battery Charge Time.....	3-4 Hours
Total System Memory.....	256K Bytes Flash (non-volatile) memory
Device Capability.....	Total number of devices is limited only by memory
Macro Capability.....	Unlimited steps in a single macro
.....	Total number of macros is limited only by memory
.....	Macro capability on every button
Communications.....	USB programming port
Dimensions (L x W x D).....	9.75" (248mm) x 2.5" (64mm) x 1.0" (25mm)
Enclosure.....	High-impact molded ABS plastic
Weight.....	8.5 oz. (243g) with battery pack
Warranty.....	One Year (Parts & Labor) / 90 days on the battery

All specifications subject to change without notice



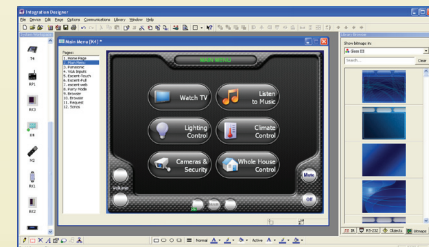
Accessories

RP-1	Remote Control Processor
RP-6	Remote Control Processor
MRP-64	Multi-Room Control Processor
XP-8	Advanced Control Processor
RM-433	RF Receiver
RCM-12	Relay Control Module
ECB-5	IR Emitter Connecting Block
CM-232	RS-232 Communication Module
VPS-1	Voltage Power Sensor
SPS-1	Video Sync Power Sensor



Other RTI Products

T1	Universal System Controller
M2	Universal System Controller
T2-Cs	Universal System Controller
T2-C	Universal System Controller
T3-V	Universal System Controller
T4	Universal System Controller
U1	Waterproof Controller
U2	Waterproof Controller
RKM-1	In-Wall Multi-Room Audio Keypad
RK1	In-Wall Keypad Controller
RK2	In-Wall Touchscreen Controller
RK3	In-Wall Touchscreen Controller
K4	In-Wall Touchscreen Controller
IR-PRO	Infrared Capture System



Integration Designer™ Programming Software

5775 12th Avenue East, Suite 180, Shakopee, MN 55379
 PH: (952) 253-3100 • Website: www.rticorp.com

RTI
 It's Under Control®